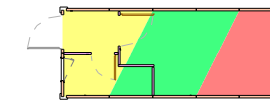
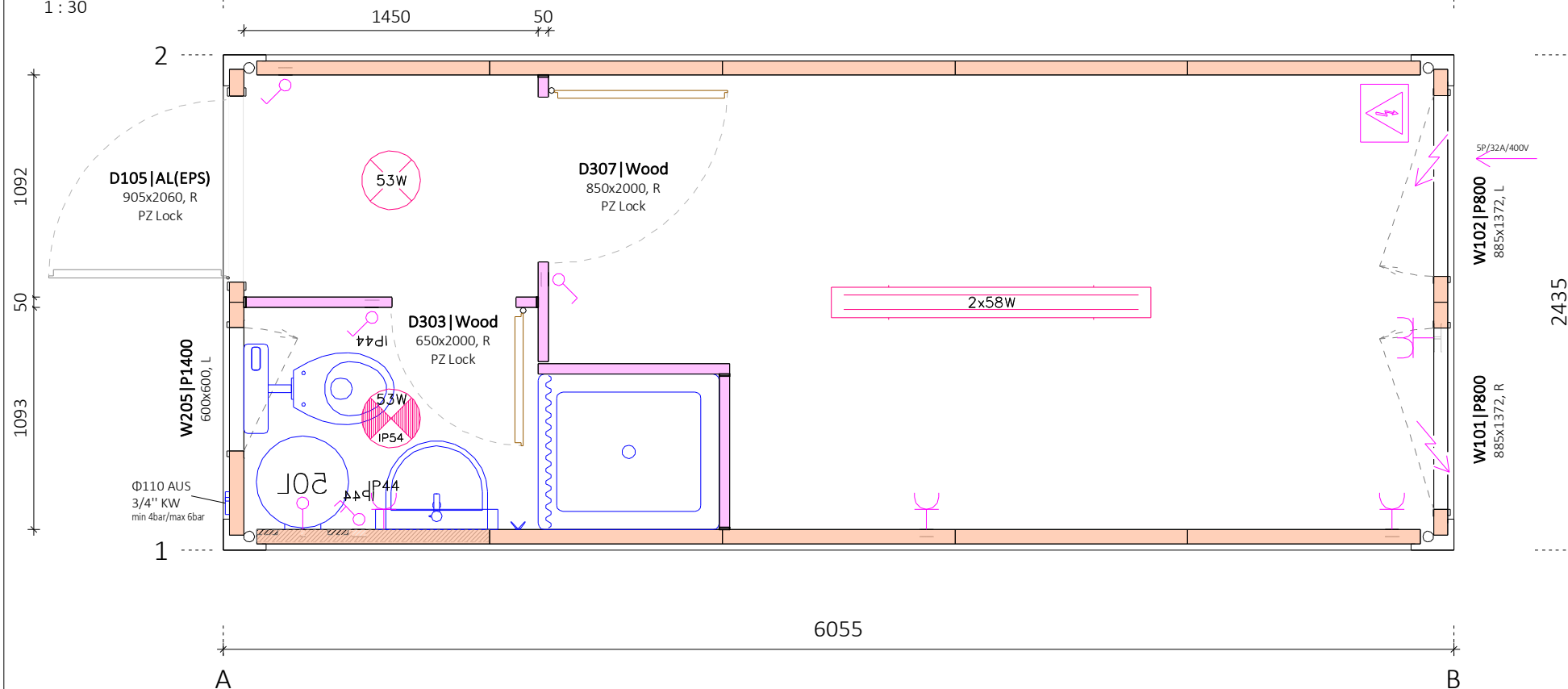
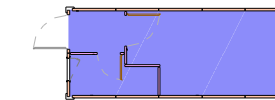


Floor Plan
1 : 30



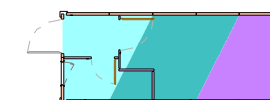
Floor Board

- Chipboard
- Plywood (optional)
- Woodcement plate (optional)



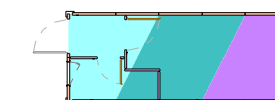
Floor Finish

- PVC Gray



Ceiling Finish

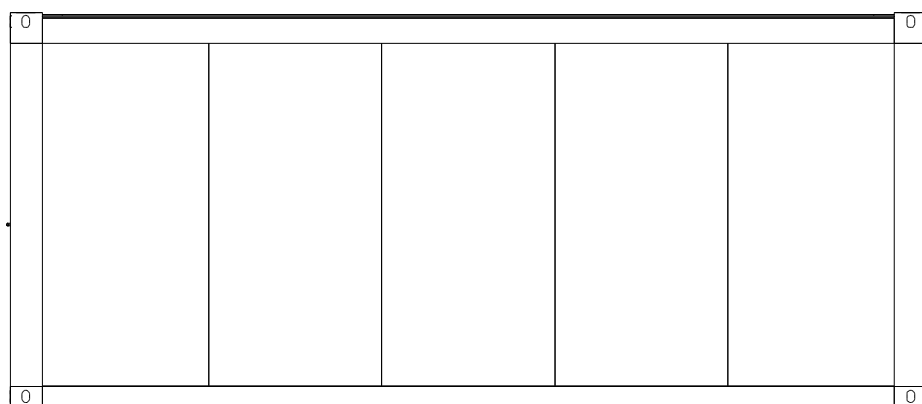
- Chipboard white
- Plasterboard (optional)
- Steel Sheeting (optional)



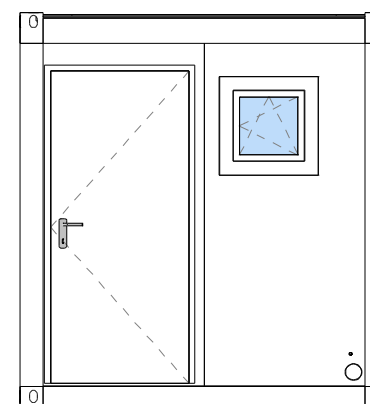
Interior Wall Finish

- Chipboard white
- Plasterboard (optional)
- Steel Sheeting (optional)

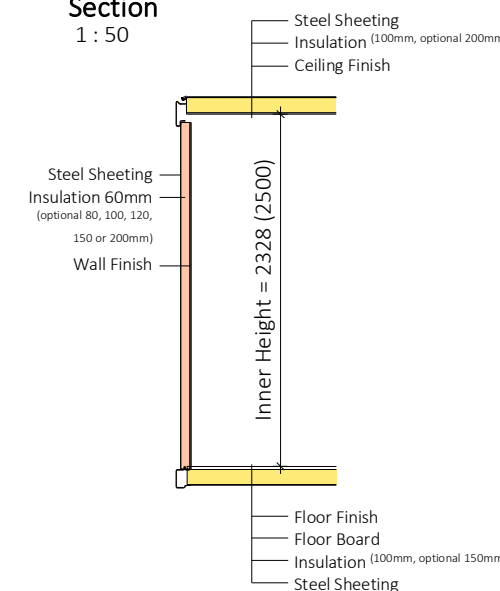
View Front side
1 : 50



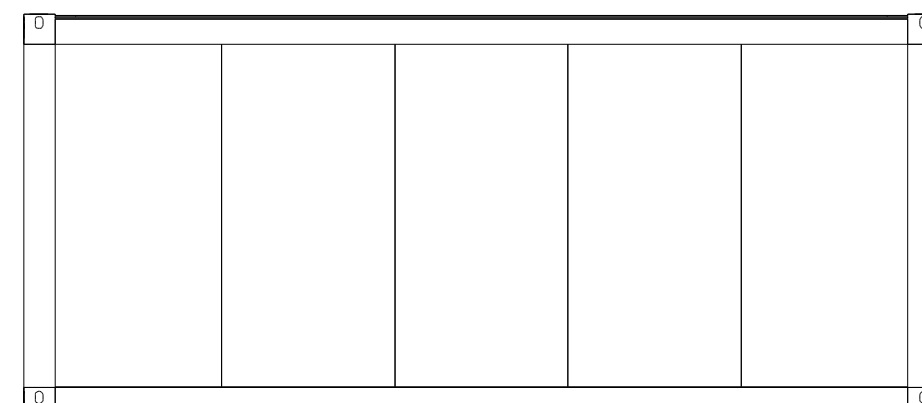
View Left side
1 : 50



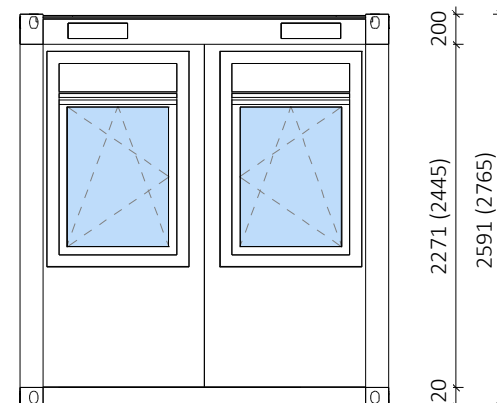
Section
1 : 50



View Back side
1 : 50



View Right side
1 : 50



Pos.	Title	NET Dim.	Dim.	Material	Pcs.
D105	Door single AL(EPS), R	805x2000	905x2060	AL	1
D303	Door Leaf Wood, R	610x1990	650x2000	Wood	1
D307	Door Leaf Wood, R	810x1990	850x2000	Wood	1
W101	Window, with shutters, R		885x1372	PVC	1
W102	Window, with shutters, L		885x1372	PVC	1
W205	Window single, no shutters, L		600x600	PVC	1

Light type		Pcs.
	Light 1x53W	1
	Light sanitary 1x53W IP54	1
	Fluo light 2x58W	1

Electrical equipment		Pcs.
	Switch 2P IP44	1
	Junction Box	1
	Socket Double IP20	1
	Socket IP20	2
	Socket IP44	1
	Switch IP20	2
	Switch IP44	1

Panel Type	Insulation	Length [m]	Stk.
	FTVL-60 [9002/white]	60mm	16.03 14
	SI-50	30mm	4.52 4

REM d.o.o.

Labels	/
Plumbing System	/
Electric Type	IEC 60364
Forklift	/
Roof Insulation	100mm
Floor Insulation	100mm
Frame Galvaniz.	/
Frame Colour	RAL 9002
Interior Height	2.3 (2.5)m
Export of CTN	/

Drw. Number: 18-Tip E-1-V1
Date: 28.08.2018

NOTE: For more information please refer to technical description of containers.
Gross and net dimensions of container can vary, depending on different finish materials, insulation thicknesses etc.

V/Š: 297 / 420 mm |