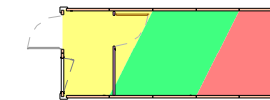
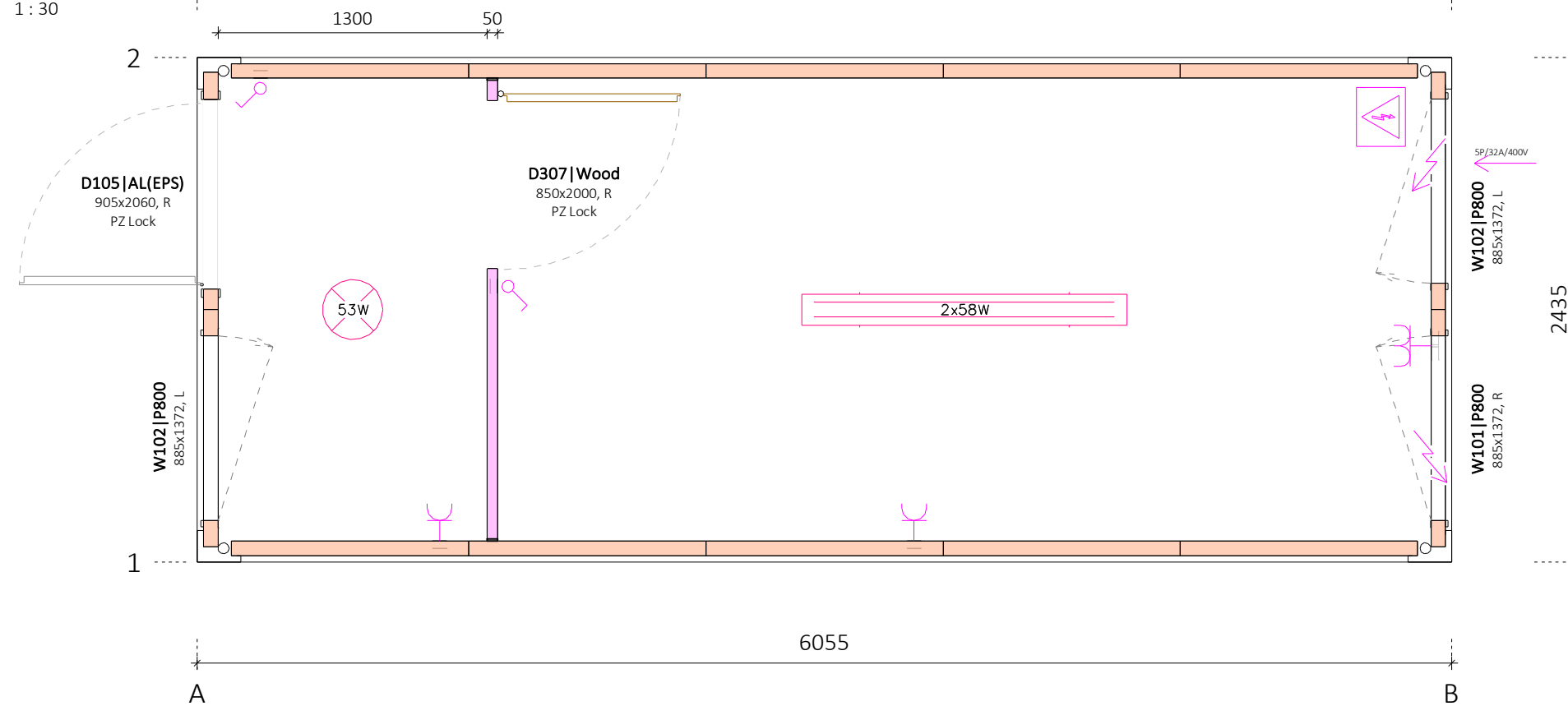
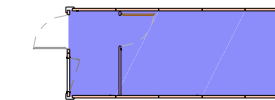


Floor Plan
1 : 30



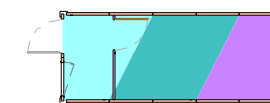
Floor Board

- Chipboard
- Plywood (optional)
- Woodcement plate (optional)



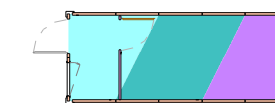
Floor Finish

- PVC Gray



Ceiling Finish

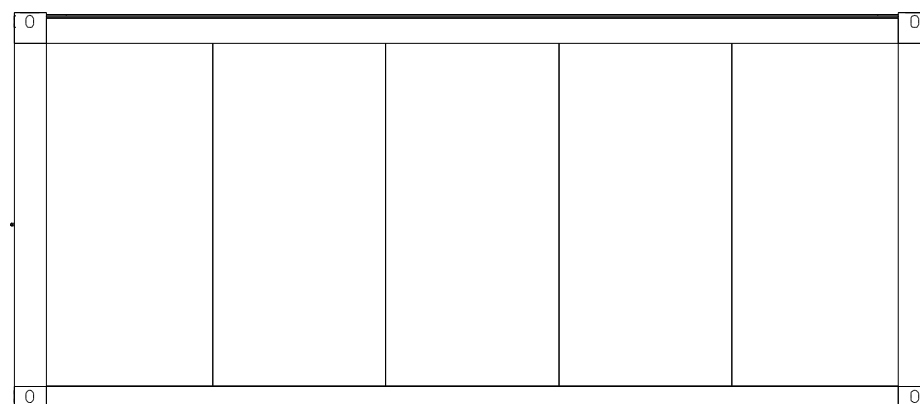
- Chipboard white
- Plasterboard (optional)
- Steel Sheeting (optional)



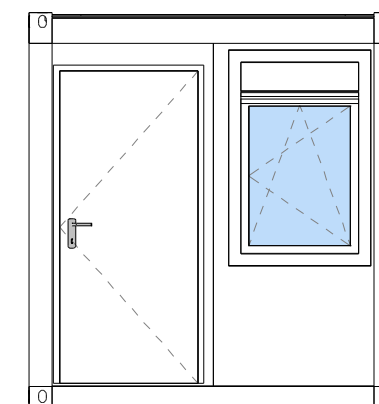
Interior Wall Finish

- Chipboard white
- Plasterboard (optional)
- Steel Sheeting (optional)

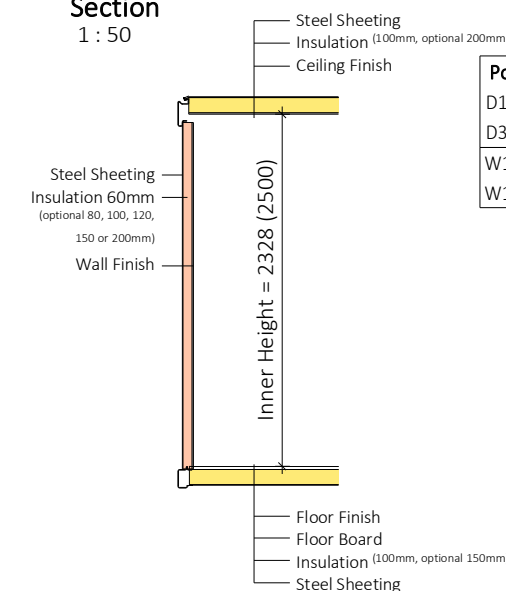
View Front side
1 : 50



View Left side
1 : 50



Section
1 : 50

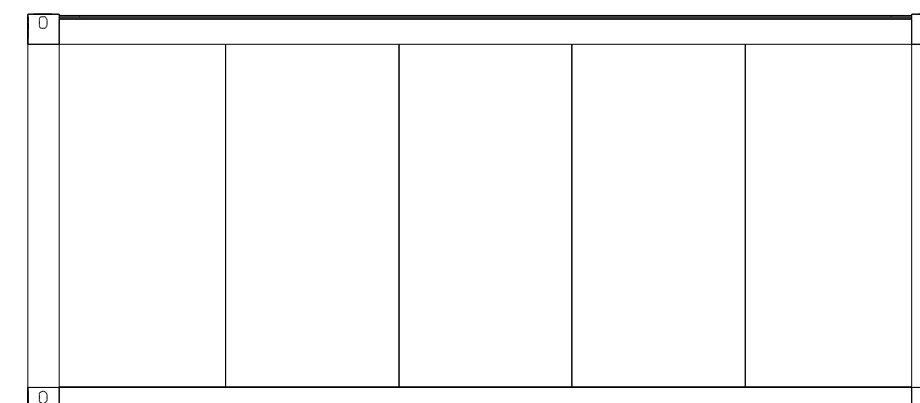


Pos.	Title	NET Dim.	Dim.	Material	Pcs.
D105	Door single AL(EPS), R	805x2000	905x2060	AL	1
D307	Door Leaf Wood, R	810x1990	850x2000	Wood	1
W101	Window, with shutters, R		885x1372	PVC	1
W102	Window, with shutters, L		885x1372	PVC	2

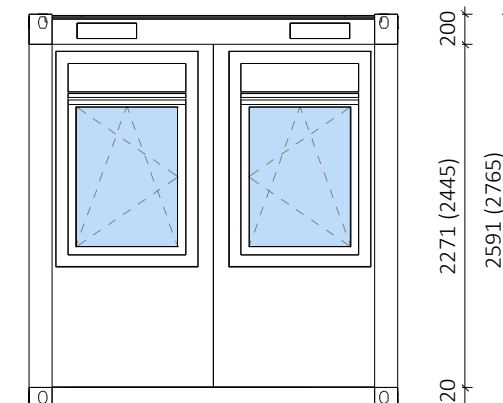
Light type	Pcs.
Light 1x53W	1
Fluo light 2x58W	1

Electrical equipment	Pcs.
Socket Double IP20	1
Socket IP20	2
Switch IP20	2

View Back side
1 : 50



View Right side
1 : 50



Panel Type	Insulation	Length [m]	Stk.
FTVL-60 [9002/white]	60mm	16.03	14
SI-50	30mm	2.22	1

REM d.o.o.

Labels	/
Plumbing System	/
Electric Type	IEC 60364
Forklift	/
Roof Insulation	100mm
Floor Insulation	100mm
Frame Galvaniz.	/
Frame Colour	RAL 9002
Interior Height	2.3 (2.5)m
Export of CTN	/

Drw. Number: 18-Tip C-1-V1
Date: 28.08.2018

NOTE: For more information please refer to technical description of containers.
Gross and net dimensions of container can vary, depending on different finish materials, insulation thicknesses etc.

V/Š: 297 / 420 mm |